

CONTINUING MEDICAL EDUCATION

Best in the West, Top 5 in the Nation



**DOHENY**  
EYE INSTITUTE

**UCLA**

Stein Eye Institute

4th Annual Doheny-UCLA

# INTERNATIONAL RETINA SYMPOSIUM

January 31, 2026

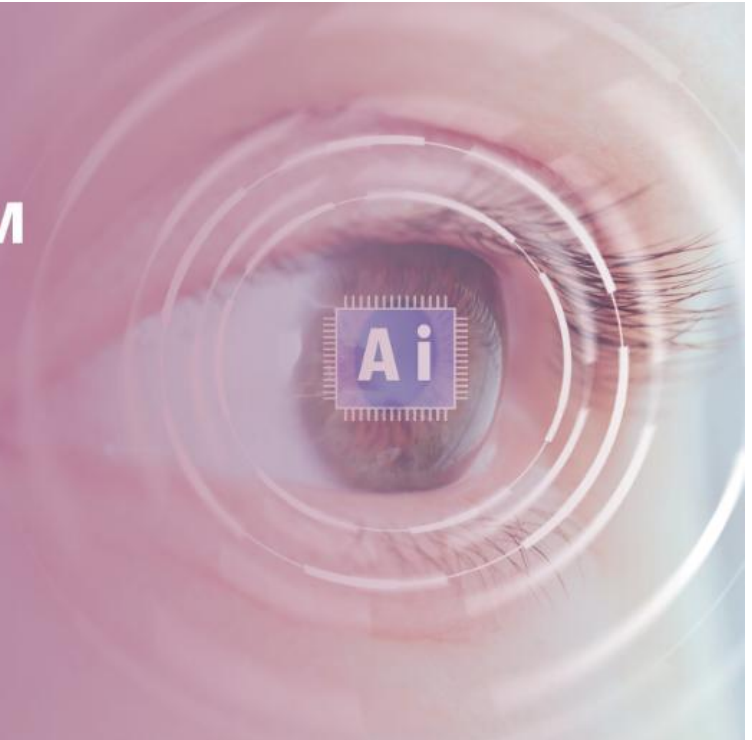
*National Keynote Speaker*

**Mark W. Johnson, MD**

*International Keynote Speaker*

**Sobha Sivaprasad, MD, FRCOphth**

- AI & Imaging
- Gene Therapy
- Surgical Advances



**Doheny Eye Institute | 150 North Orange Grove Blvd. | Pasadena, CA 91103**

## Guest Lecturers



**Sobha Sivaprasad, MD, FRCOphth**  
Director, Moorfields Clinical Research Facility and  
Consultant at Moorfields Eye Hospital, NHS Trust  
Professor, Retinal Clinical Research at  
University College London, United Kingdom



**Mark W. Johnson, MD**  
Professor of Ophthalmology and Visual Sciences  
Section Head - Retina Division, Kellogg Eye Center  
University of Michigan Medical School

## Course Directors



**Michael Ip, MD**  
Gavin S. Herbert Endowed Chair for  
Macular Degeneration  
Professor of Ophthalmology  
David Geffen School of Medicine UCLA  
Medical Director, Doheny Imaging Reading Center  
Doheny Eye Institute



**Giulia Corradetti, MD**  
Health Sciences Clinical Instructor  
David Geffen School of Medicine UCLA  
Scientist, Doheny Eye Institute



Doheny Eye Institute is accredited by the California Medical Association (CMA) to provide continuing Medical Education for physicians.

**Credit Designation Statement:** Doheny Eye Institute designates this live activity for a maximum of 7 AMA PRA Category 1 credits.

Physicians should only claim credit commensurate with the extent of their participation in this activity.

## **TABLE OF CONTENTS**

- Welcome
- About Doheny Eye Institute
- Accreditation & Learning Objectives
- Disclosure Information
- Program Agenda
- Featured Keynote Speakers
- Faculty & Speaker Information
- Program Evaluation
- Upcoming CME Programs

## WELCOME

Dear Colleagues:

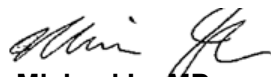
This full-day meeting brings together ophthalmologists and related healthcare professionals to explore recent advances and emerging approaches in the diagnosis and management of both common and rare retinal diseases. In a field that continues to move quickly, this symposium offers an opportunity to pause, learn, and connect around what matters most in patient care.

We are delighted to welcome an outstanding group of internationally recognized retina experts. Our **international keynote speaker, Sobha Sivaprasad, MD, FRCOphth**, of Moorfields Eye Hospital, will share insights on retinal non-perfusion and clinical trial endpoints in intermediate AMD. Our **national keynote speaker, Mark W. Johnson, MD**, of the University of Michigan, will address vitelliform maculopathies and the real-world challenges of anti-VEGF therapy for proliferative diabetic retinopathy.

The program also features a distinguished faculty from UCLA Ophthalmology (Stein and Doheny) and leading institutions across Southern California, covering advances in imaging, therapeutics, surgery, artificial intelligence, and patient-centered care.

We are deeply grateful to our industry partners and exhibitors for their generous support and shared commitment to ophthalmic education.

Thank you for being with us today. We hope you enjoy the program and the conversations it inspires.



**Michael Ip, MD**  
Course Director  
Gavin S. Herbert Endowed Chair in  
Macular Degeneration  
Professor of Ophthalmology  
David Geffen School of Medicine UCLA  
Medical Director, Doheny Image Reading Center  
Doheny Eye Institute



**Giulia Corradetti, MD**  
Course Director  
Health Science Clinical Instructor  
David Geffen School of Medicine UCLA  
Scientist  
Doheny Eye Institute



## ABOUT DOHENY EYE INSTITUTE

The story of Doheny Eye Institute begins with the vision and generosity of Carrie Estelle Doheny, who, after experiencing a devastating vision loss, founded the Doheny Eye Foundation in 1947 with the mission "to further the conservation, improvement, and restoration of human eyesight." With the help of her ophthalmologist, Dr. A. Ray Irvine, Sr., and his sons, Doheny established the first eye pathology laboratory in Los Angeles. The institute quickly became renowned for its commitment to advancing vision research and patient care.

Over the decades, Doheny Eye Institute assembled a team of world-class scientists, clinicians, and researchers, propelling the institute to the forefront of ophthalmology. In 2013, Doheny entered a long-term affiliation with UCLA's Stein Eye Institute, strengthening its research and clinical capabilities. Today, Doheny Eye Institute is recognized as a preeminent center for vision research, particularly in areas like age-related macular degeneration (AMD) and the application of machine learning in ophthalmology, contributing to groundbreaking advancements in the field.

Today, the two internationally recognized eye institutes, Doheny Eye Institute and Stein Eye Institute, underpinned by the UCLA Department of Ophthalmology, are ranked fifth among the top ophthalmology programs by *U.S. News & World Report*. This distinction recognizes the strength, reputation, and standing of our two top-tier institutions, working together since 2013 to advance vision research, education, and patient care under the leadership of:

### **Deborah Ferrington, PhD**

Stephen J. Ryan-Arnold and Mabel Beckman  
Foundation Endowed Presidential Chair  
Chief Scientific Officer  
Professor of Ophthalmology  
David Geffen School of Medicine UCLA  
Doheny Eye Institute

### **Marissa Goldberg**

Chief Executive Officer  
Doheny Eye Institute

### **Anne Coleman, MD, PhD**

Chair, UCLA Department of Ophthalmology  
Director, UCLA Stein Eye Institute  
Fran and Ray Stark Professor of Ophthalmology  
Professor of Epidemiology at the UCLA Fielding  
School of Public Health  
Director of the UCLA Center for Eye Epidemiology,  
Mobile Eye Clinic, and the Center for Community  
Ophthalmologists and Vision Health  
David Geffen School of Medicine UCLA

### **Alfredo Sadun, MD, PhD**

Vice Chairman and Flora L. Thornton Endowed  
Chair in Vision Research  
David Geffen School of Medicine UCLA  
Doheny Eye Institute

### **ACCREDITATION**

Doheny Eye Institute is accredited by the California Medical Association to provide continuing medical education for physicians.

### **CREDIT DESIGNATION**

The Doheny Eye Institute Office of Continuing Medical Education designates a maximum of 7 AMA PRA Category 1 Credits™ for this live activity. Physicians should claim only the credit commensurate with the extent of their participation in the activity.

### **LEARNING OBJECTIVES**

Upon completion of the course, participants will be able to:

1. Identify gaps in early detection and risk stratification of retinal diseases and apply advanced imaging modalities, including OCT and OCTA, to improve diagnostic accuracy and monitoring.
2. Address unmet needs in the management of retinal diseases by evaluating emerging evidence, clinical trial data, and real-world outcomes to optimize treatment selection and timing across disease stages.
3. Implement evolving, patient-centered care strategies that incorporate technological innovations and shared decision-making to improve clinical outcomes and patient engagement.

### **EVALUATIONS**

Evaluation forms are an important tool in physician gaps and program planning. We welcome your comments and suggestions. Your input is valuable and will be used for planning future programs.

### **OBTAINING CME CREDIT**

You must complete, sign, and submit an evaluation form (include number of credits requested) to receive CME credit. The completed evaluation form may be returned to the registration desk at the end of the conference or emailed to [cme@doheny.org](mailto:cme@doheny.org). A CME certificate will be emailed to you within 7 business days upon completion of the evaluation.

### **QUESTIONS**

If you have questions or comments, please contact our CME office at 323-342-7106 or email [cme@doheny.org](mailto:cme@doheny.org).

## DISCLOSURE STATEMENT

The Doheny Continuing Medical Education (CME) policy is to ensure balance, independence, objectivity, and scientific rigor in all CME activities. CME content will be evidence-based and free of commercial bias. Furthermore, Doheny CME providers have identified, reviewed, and resolved all conflicts that persons involved in the development, management and presentation disclose prior to an educational activity. All financial relationships are disclosed below.

### DISCLOSURE SUMMARY

The speakers and CME program planners listed below have indicated that they do **not** have financial relationships with commercial interests:

Aya Barzelay-Wollman, MD, PhD	Kristie Lin, MD	Moritz Pettenkofer, MD
Saghar Bagheri, MD, PhD	David Lozano Giral, MD, PhD	Victoria Tseng, MD, PhD
Kirk Hou, MD, PhD	Tara A. McCannel, MD, PhD	Cecilia Zamudio

The speakers and CME Committee members listed below have indicated financial relationships with commercial interests/industry.

**Benjamin Bert, MD, FACS:** Research support: Novartis, Regeneron

**David Boyer, MD:** Consultant for: 4DT, Adverum Biotechnologix, Aerpio, Alcon Laboratories, Inc., Alkahest, Allergan, Inc., Allegro, Allgenesis, Amgen Inc., Amaros, Annexon, Apellis Pharmaceuticals, Inc., AsclepiX Therapeutics, Ashvattha, Aura, Bausch + Lomb, Bayer Healthcare Pharmaceuticals, Boehringer Ingelheim, Chengdu Kanghong Biotec, Clearside Biomedical, Inc., EyePoint Pharmaceuticals, Galimedix Therapeutics, Inc., Genentech, Glaukos Corporation, Iconic Therapeutics Inc., InflammX, Jcyte, Lumithera, Nanoscope, Neurotech, Novartis Pharma AG, Ocugen, Inc., Ocular Therapeutix, Ora, Inc., Oxurion, Ray Vision, Inc., Regeneron Pharmaceuticals, Inc., REGENXBIO, Santen, Inc., Stealth Biotherapeutics, Sun Pharmaceutical Industries, THEA, Unity; Research support: Oligbio

**Giulia Corradetti, MD:** Consultant for: Astellas Pharma Inc, Chugai Pharmaceutical, Character Biosciences, Nidek

**Michael Ip, MD:** Consultant for: Alimera, Allergan, Amgen, Apellis, Astellas Boehringer Ingelheim, Clearside Biomedical, Genentech, Novartis, Regeneron, Zeiss; Research support: Adverum, Apellis, Astellas, Aviceda, Biogen, Boehringer Ingelheim, Genentech, Lineage Cell Therapeutics, ONL Therapeutics, Regeneron, Regenexbio, SpliceBio, 4DMT

**Mark W. Johnson, MD:** IDMC Member: Aura Biosciences, Opthea, Boehringer Ingelheim; Research support: Apellis

**Bobek Modjtahedi, MD, MBA:** Research support: Genentech/Roche; VoxelCloud

**David Sarraf, MD:** Consultant: Visionix, Amgen, Inc., Eyepoint

**Sobha Sivaprasad, MD, FRCOphth:** Consultant for: AbbVie, Bayer, Boehringer Ingelheim, Oculis, Roche

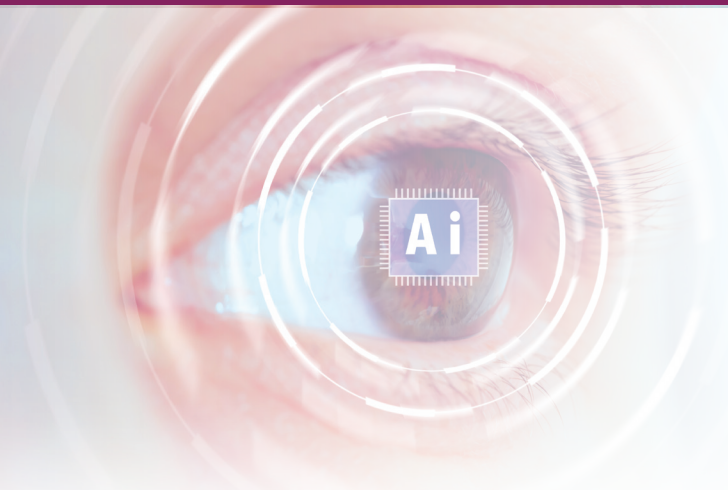
**Irene Tsui, MD:** Consultant: Bausch and Lomb

4th Annual Doheny-UCLA **INTERNATIONAL RETINA SYMPOSIUM**

January 31, 2026 7:30 am - 4:00 pm

*National Keynote Speaker*  
**Mark W. Johnson, MD**

*International Keynote Speaker*  
**Sobha Sivaprasad, MD, FRCOphth**



START	END	PRESENTER	PRESENTATION TITLE	MODERATOR
7:30 am	8:00 am		Breakfast and Registration	
8:00 am	8:05 am	Michael Ip, MD	Welcome from the Course Director	
8:05 am	8:20 am	David Boyer, MD	Real World Findings of Photobiomodulation Treatment for Dry AMD	
8:20 am	8:35 am	Moritz Pettenkofer, MD	Avacincaptad-Pegol: An Update from the UCLA Practice	
8:35 am	8:50 am	Bobeck Modjtahedi, MD, MBA	Predictive Modeling and New Care Pathways for Patients with Diabetes	
8:50 am	8:55 am	Michael Ip, MD	Introduction to Mark W. Johnson, MD	
8:55 am	9:25 am	Keynote Speaker Mark Johnson, MD	Mechanisms and Morphologies of the Vitelliform Maculopathies	
9:25 am	9:40 am	Kirk Hou, MD, PhD	AMD and Dementia in the All of Us Database	
9:40 am	10:10 am	Panel: Interesting Retinal Cases	Panelists: Mark Johnson, MD; Sobha Sivaprasad, MD; Bobeck Modjtahedi, MD; David Boyer, MD; Michael Ip, MD	PANEL MODERATOR: David Sarraf, MD
10:10 am	10:30 am	<b>B R E A K</b>		
10:30 am	10:35 am	Giulia Corradetti, MD	Introduction to Sobha Sivaprasad, MD, FRCOphth	
10:35 am	11:05 am	International Keynote Speaker: Sobha Sivaprasad, MD, FRCOphth	Steps to Demystify Retinal Non-Perfusion	
11:05 am	11:20 am	David Sarraf, MD	Plaquenil vs. Pentosan Toxic Maculopathy: Updated Guidelines for Screening and Diagnosis	
11:20 am	11:35 am	Irena Tsui, MD	Surgery for Myopic Traction Maculopathy: Indications, Pitfalls, and Outcomes	
11:35 am	11:50 am	Sobha Sivaprasad, MD, FRCOphth	Talk #2 - Clinical Trial Endpoints in Intermediate AMD	
11:50 am	12:05 pm	Giulia Corradetti, MD	The Retina as a Window to Systemic Health: The Rise of Oculomics	
12:05 pm	12:20 pm	Michael Ip, MD	Optimal Timing of Treatment Initiation for Central Retinal Vein Occlusion	
12:20 pm	1:20 pm	<b>L U N C H</b>		
1:20 pm	1:35 pm	Tara McCannel, MD, PhD	Unexpectedly Low Rates of Metastasis and Death: In Uveal Melanoma Treated with Brachytherapy, Vitrectomy and Silicone Oil	
1:35 pm	1:50 pm	Phillip Le, MD, PhD	PDT Update: Is There Still a Role for PDT in the Anti-VEGF Era?	
1:50 pm	2:05 pm	Mark W. Johnson, MD	Talk #2 - The Cost and Perils of Anti-VEGF Therapy for PDR	
2:05 pm	2:20 pm	Aya Barzelay Wollman, MD, PhD	AI-Guided Robotic Microsurgery for Retinal Therapy: Advancing Precision Beyond Human Limits	
2:20 pm	2:35 pm	Kristie Lin, MD	Joyful Medicine: The Transformative Power of Compassionate Care	
2:35 pm	2:50 pm	David Lozano Giral, MD, PhD	Update on the Treatment of Proliferative Vitreoretinopathy in Retinal Detachment	
2:50 pm	3:05 pm	David Sarraf, MD	Talk #2 - Type 4 MNV: A New Addition to the OCT Classification of Neovascular AMD	
3:05 pm	3:20 pm	Saghar Bagheri, MD, PhD	Shared Decision-Making in Geographic Atrophy	
3:20 pm	3:50 pm	Panel: FDA-Approved Emerging Treatments for Dry Macular Degeneration	Panelists: David Sarraf, MD; Mark Johnson, MD; Giulia Corradetti, MD; Sobha Sivaprasad, MD	PANEL MODERATOR: Michael Ip, MD
3:50 pm	3:55 pm	Closing Remarks - Dr. Ip		

---

**FEATURED SPEAKER**



**MARK W. JOHNSON, MD**

Professor, Ophthalmology and Visual Sciences  
University of Michigan  
W.K. Kellogg Eye Center

---

**BIOGRAPHY**

Mark W. Johnson, MD, is an internationally recognized vitreoretinal surgeon, educator, and physician-scientist whose career has profoundly shaped the field of retinal disease and surgery. He is Professor of Ophthalmology and Visual Sciences at the University of Michigan Medical School and has been a longstanding member of the faculty at the W.K. Kellogg Eye Center, where he has contributed for more than three decades to patient care, research, and physician training

Dr. Johnson earned his undergraduate degree in chemistry from Brigham Young University, graduating magna cum laude with highest honors, before receiving his medical degree from the University of Utah, where he was elected to the Alpha Omega Alpha Honor Medical Society. He completed his ophthalmology residency at the University of Michigan, serving as Chief Resident, followed by advanced fellowship training in macular diseases and vitreoretinal surgery at the Bascom Palmer Eye Institute under the mentorship of J. Donald M. Gass, MD, one of the most influential figures in retinal medicine

A prolific academic leader, Dr. Johnson has served as principal investigator or co-investigator on numerous landmark multicenter clinical trials that helped define modern treatments for age-related macular degeneration, diabetic retinopathy, retinal vein occlusion, and vitreomacular disease. His work spans early photodynamic therapy trials through pivotal anti-VEGF studies and contemporary investigations into geographic atrophy and retinal interface disorders. He has also served on multiple national and international data and safety monitoring committees, including those sponsored by the National Eye Institute

Dr. Johnson's scholarly influence extends to editorial leadership. He is an Associate Editor of both *The American Journal of Ophthalmology* and *Retina* and has served for decades as a trusted peer reviewer for the field's most respected journals. His dedication to education is equally notable; he has mentored dozens of vitreoretinal fellows and is a highly sought-after invited lecturer worldwide.

His career has been recognized with many of the field's highest honors, including the J. Donald M. Gass Medal from The Macula Society, the Life Achievement Honor Award from the American Academy of Ophthalmology, and the Senior Honor Award from the American Society of Retina Specialists. Dr. Johnson has also served as President of both The Retina Society and The Macula Society, reflecting the esteem in which he is held by peers across the globe.

---

**FEATURED SPEAKER**



**SOBHA SIVAPRASAD, MD, FRCOphth**

Professor of Retinal Clinical Studies  
Department of Ocular Biology  
UCL Institute of Ophthalmology  
Consultant Ophthalmologist  
Moorfields Eye Hospital  
United Kingdom

---

**BIOGRAPHY**

Sobha Sivaprasad, FRCOphth, is an internationally renowned clinician-scientist and leader in medical retina whose work has advanced the understanding and treatment of retinal vascular disease and age-related macular degeneration. She is Professor of Retinal Clinical Research at the UCL Institute of Ophthalmology and a Consultant Ophthalmologist in Medical Retina at the NIHR Moorfields Biomedical Research Centre, where she plays a central role in shaping translational and clinical research programs.

Dr. Sivaprasad completed her medical training in India before pursuing advanced specialist training in the United Kingdom. She holds multiple prestigious fellowships, including FRCOphth from the Royal College of Ophthalmologists and FRCSEd from the Royal College of Edinburgh, as well as a Doctorate in Management from Cranfield University. Her career reflects a rare combination of clinical excellence, scientific rigor, and strategic research leadership.

A global authority in retinal clinical research, Dr. Sivaprasad serves as Director of the Moorfields Clinical Research Facility and Vascular Theme Co-Lead for the Moorfields Biomedical Research Centre. She has held influential national leadership roles, including Chair of the Scientific Committee of the Royal College of Ophthalmologists, and serves internationally on steering committees, data monitoring boards, and guideline panels for major global clinical trials.

Dr. Sivaprasad has served as chief or principal investigator on more than 65 studies and secured tens of millions of pounds in competitive funding from the NIHR, Wellcome Trust, UKRI, and industry partners. Her research spans diabetic retinopathy, retinal vein occlusion, central serous chorioretinopathy, as well as advanced imaging and artificial intelligence. She has authored more than 640 peer-reviewed publications, with an h-index of 83.

Her contributions have been recognized with many of the field's highest honors, including the Bowman Lecture of the Royal College of Ophthalmologists, the Macula Society Paul Henkind Memorial Lecture, the ASRS Honors Award, and the NIHR Senior Investigator Award. A dedicated mentor, she remains deeply committed to developing the next generation of clinician-scientists and improving outcomes for patients worldwide.

**Speaker/Professional Title/Presentation Title  
In speaking order**



**Real World Findings of Photobiomodulation Treatment for Dry AMD**

***David Boyer, MD***

Retina Specialist and Vitreoretinal Surgeon  
Retina Vitreous Associates Medical Group  
Los Angeles, CA



**Avacincaptad-Pegol: An Update from the UCLA Practice**

***Moritz Pettenkofer, MD***

Health Sciences Clinical Instructor  
David Geffen School of Medicine UCLA  
UCLA Stein Eye Institute



**Predictive Modeling and New Care Pathways for Patients with Diabetes**

***Bobeck S. Modjtahedi, MD, MBA***

Vitreoretinal Surgeon, Southern California Medical Group, Baldwin Park  
Director, Eye Monitoring Center  
Kaiser Permanente Southern California, Georgia, Colorado, and Hawaii  
Ophthalmology Specialty Director and Associate Professor  
Department of Clinical Science  
Kaiser Permanente Bernard J. Tyson School of Medicine  
Clinician Investigator, Department of Research & Evaluation  
Southern California Permanente Medical Group



**Mechanisms and Morphologies of the Vitelliform Maculopathies**

***Mark W. Johnson, MD***

Professor of Ophthalmology and Visual Sciences  
Section Head - Retina Division, Kellogg Eye Center  
University of Michigan Medical School



**AMD and Dementia in the All of Us Database**

***Kirk Hou, MD, PhD***

Retinal and Vitreous Diseases Specialist  
Doheny Eye Center-UCLA  
David Geffen School of Medicine UCLA  
Doheny Eye Institute



### **Steps to Demystify Retinal Non-Perfusion**

***Sobha Sivaprasad, MD, FRCOphth***

Director, Moorfields Clinical Research Facility and  
Consultant at Moorfields Eye Hospital, NHS Trust  
Professor, Retinal Clinical Research at University College London  
United Kingdom



### **Plaquenil vs. Pentosan Toxic Maculopathy: Updated Guidelines for Screening and Diagnosis**

***David Sarraf, MD***

Professor of Ophthalmology  
Retinal Disorders and Ophthalmic Genetic Division  
David Geffen School of Medicine UCLA  
UCLA Stein Eye Institute



### **Surgery for Myopic Traction Maculopathy: Indications, Pitfalls, and Outcomes**

***Irena Tsui, MD***

Hilel Lewis Family Endowed Chair  
Associate Professor of Ophthalmology  
David Geffen School of Medicine UCLA  
Doheny and Stein Eye Institutes



### **Clinical Trial Endpoints in Intermediate AMD**

***Sobha Sivaprasad, MD, FRCOphth***

Director, Moorfields Clinical Research Facility and  
Consultant at Moorfields Eye Hospital, NHS Trust  
Professor, Retinal Clinical Research at University College London  
United Kingdom



### **The Retina as a Window to Systemic Health: The Rise of Oculomics**

***Giulia Corradetti, MD***

Health Sciences Clinical Instructor  
David Geffen School of Medicine UCLA  
Scientist, Doheny Eye Institute



### **Optimal Timing of Treatment Initiation for Central Retinal Vein Occlusion**

***Michael Ip, MD***

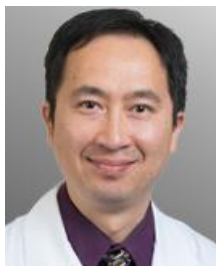
Gavin S. Herbert Endowed Chair for Macular Degeneration  
Professor of Ophthalmology  
David Geffen School of Medicine UCLA  
Medical Director, Doheny Imaging Reading Center  
Doheny Eye Institute



### **Unexpectedly Low Rates of Metastasis and Death: In Uveal Melanoma Treated with Brachytherapy, Vitrectomy and Silicone Oil**

***Tara McCannel, MD, PhD***

Director, Ophthalmic Oncology Center  
Surgeon of Retina and Vitreous Disease  
Professor, Department of Ophthalmology  
UCLA Stein Eye Institute



### **PDT Update: Is There Still a Role for PDT in the Anti-VEGF Era?**

***Phillip Le, MD, PhD***

Retina Specialist  
Doheny Eye Center UCLA  
Doheny Eye Institute



### **The Cost and Perils of Anti-VEGF Therapy for PDR**

***Mark W. Johnson, MD***

Professor of Ophthalmology and Visual Sciences  
Section Head - Retina Division, Kellogg Eye Center  
University of Michigan Medical School



### **AI-Guided Robotic Microsurgery for Retinal Therapy: Advancing Precision Beyond Human Limits**

***Aya Barzelay-Wollman, MD, PhD***

Assistant Professor  
David Geffen School of Medicine UCLA  
UCLA Stein Eye Institute



### **Joyful Medicine: The Transformative Power of Compassionate Care**

***Kristie Lin, MD***

Retina Specialist and Vitreoretinal Surgeon  
Private Practice, Pasadena



### **Update on the Treatment of Proliferative Vitreoretinopathy in Retinal Detachment**

***David Lozano Giral, MD, PhD***

Health Sciences Clinical Instructor  
David Geffen School of Medicine UCLA  
UCLA Stein Eye Institute



## **Type 4 MNV: A New Addition to the OCT Classification of Neovascular AMD**

***David Sarraf, MD***

Professor of Ophthalmology  
Retinal Disorders and Ophthalmic Genetic Division  
David Geffen School of Medicine UCLA  
UCLA Stein Eye Institute



## **Shared Decision-Making in Geographic Atrophy**

***Saghar Bagheri, MD, PhD***

Retina Clinical Fellow  
Doheny Eye Center UCLA  
David Geffen School of Medicine, UCLA  
Doheny Eye Institute

### PROGRAM EVALUATION

To help us determine if your educational needs were met during this course and to further improve upcoming courses, please complete this form. Please print your responses.

#### 1. Please Rate the COURSE FACULTY (in speaking order)

Speaker	Excellent	Very Well	Average	Comments
David Boyer, MD				
Moritz Pettenkofer, MD				
Bobeck Modjtahedi, MD, MBA				
Mark W. Johnson, MD				
Kirk Hou, MD, PhD				
Sobha Sivaprasad, MD, FRCOphth				
David Sarraf, MD				
Irena Tsui, MD				
Giulia Corradetti, MD				
Michael Ip, MD				
Tara McCannel, MD, PhD				
Phillip Le, MD, PhD				
Aya Barzelay Wollman, MD, PhD				
Kristie Lin, MD				
David Lozano Giral, MD, PhD				
Saghar Bagheri, MD, PhD				

2. **Your present status is: (check one)**  MD (currently practicing)  MD, PhD  Fellow/Resident  
 Medical student  OD/Health Care Professional  Retired physician  Other \_\_\_\_\_

#### 3. To what extent did the overall presentation meet the following course objectives? (check one)

Objectives:	Excellent	Very Well	Average	Comments
1. Identify gaps in early detection and risk stratification of retinal diseases and apply advanced imaging modalities, including OCT and OCTA, to improve diagnostic accuracy and monitoring.				
2. Address unmet needs in the management of retinal diseases by evaluating emerging evidence, clinical trial data, and real-world outcomes to optimize treatment selection and timing across disease stages.				
3. Implement evolving, patient-centered care strategies that incorporate technological innovations and shared decision-making to improve clinical outcomes and patient engagement.				

**4. Please complete the statement below:**

As a result of what I learned from my participation in this CME activity, I intend to make the following practice/performance changes and/or modifications that I believe will result in improved patient outcomes:

---

---

**5. What new knowledge did you gain from this activity?**

- Pre-op evaluation       Use of diagnostic testing       Post-op follow-up care  
 Surgical Procedure       Emerging Treatments       Other \_\_\_\_\_  
 Clinical evaluation       Counsel/inform patients differently

**6. Were today's presentations free of commercial bias? (Commercial bias is defined as information presented in a manner that attempts to sway participants' opinion in favor of a product or business.)**

Yes     No (If No, please explain)

---

**7. What barriers do you anticipate encountering in implementing your intended changes in practice?**

Time     Resources     Organization     Staff     None     Other \_\_\_\_\_

**8. Were issues in cultural and linguistic competency (e.g., difference in prevalence, diagnosis, treatment in diverse populations, linguistic skills, and pertinent cultural data) addressed in this activity?**     Yes     No

**9. How did you learn about this program? (Check all that apply)**

Doheny Website     Doheny Physician     E-mail/blast     Colleague     Stein Eye Institute  
 Other (please explain) \_\_\_\_\_

**10.  Is this your first time attending this course?     First time attending an event at Doheny?**

**11. Can we contact you at a later time to survey if you have implemented any changes in your practice because of what you learned at this course?**     Yes     No

**12. Which of the following appealed to you for attending the 3<sup>rd</sup> Annual Doheny-UCLA International Retina Symposium**

Program Speakers     Location     CME Credits     Exhibitors     Fellowship     Other \_\_\_\_\_

**13. Which of the following registration fees is indicative of the educational value and overall quality of today's program? (Please check one)**

\$300     \$250     \$200     \$100 \_\_\_\_\_

**14. Suggested future topics?** \_\_\_\_\_

*Name and address must be legibly provided for attendance to be logged and CME certificate issued.*

The 4<sup>th</sup> Annual Doheny-UCLA International Retina Symposium – January 31, 2026

MD       Non-MD       Credits claimed: \_\_\_\_\_ (7 maximum)

Name: \_\_\_\_\_

Home/Business Address: \_\_\_\_\_

City, State, Zip: \_\_\_\_\_

Email: \_\_\_\_\_ Phone: \_\_\_\_\_

*Thank you for your participation*



**DOHENY**  
EYE INSTITUTE

**UCLA**

**Stein Eye Institute**

Continuing Medical Education

## **Program Schedule 2026**

**March 21, 2026**

### **Annual CME Conference**

Course Directors: Victoria Yom, MD, and Ken Lu, MD

Location: 150 N. Orange Grove Blvd., Pasadena, CA 91103

CME Credits: 7

For more information or to register, please visit [www.doheny.org/cme](http://www.doheny.org/cme).

**June 2026**

### **\*UCLA Department of Ophthalmology Annual Seminar**

Course Directors: Anthony C. Arnold, MD

Location: UCLA Stein Eye Institute, RPB Auditorium, Los Angeles

CME Max Credits: 11.25

For more information, please visit <https://ucla.cloud-cme.com>.

**September 2026**

### **8<sup>th</sup> Annual Doheny-UCLA Glaucoma Conference**

Course Directors: Vikas Chopra, MD, and Brian Francis, MD, MS

Location: 150 N. Orange Grove Blvd., Pasadena, CA 91103 CME

Credits: TBA

For more information, please visit [www.doheny.org/cme](http://www.doheny.org/cme).

*\*CME credits awarded by the David Geffen School of Medicine at UCLA*